

07

Question words

When, where, why, how, which, whose, who, what

1 Some examples of questions with these words:

Where are you going?

Which film are you going to see?

What did you do last weekend?

2 To form questions with **when, where, why** and **how**, we use these patterns:

**question word + auxiliary (do, have, etc.)
+ subject + verb**

When does the film start?

question word + be + subject

When was the exam?

3 To form questions with **which** and **whose**, we use this pattern:

which/whose + noun + auxiliary/be

Which course is he taking?

Whose coat is this?

We can also use a noun with **what**, with the same meaning as **which**:

What/Which sports do you play?

4 To form questions with **who, what, which** and **whose**, we can use both of the patterns in 2:

Who do you live with?

What is your address?

Which restaurant do you prefer?

Whose books are these?

(For more information on questions with **who, what, which** and **whose**, see unit 8 on p. 30.)

Grammar in action

1 We use **when** to ask about time and **where** to ask about places:

When did you arrive here?

Where are my keys?

2 We use **why** to ask for a reason:

Why are you wearing a coat?

3 We use **how** to ask about a process or a series of actions or events that produce a certain result. In this example, someone is asking what you do to make a certain meal:

How do you cook this dish?

4 We use **which** or **what** with a **plural noun** to ask someone to specify when there are a number of possibilities:

Which countries in Europe have you been to? ~ Italy, Spain, Germany, ...

We usually use **which** with a **singular noun** when we are asking someone to specify one thing from more than one possibility:

Which country in Europe have you been to the most? ~ Italy.

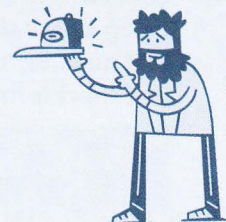
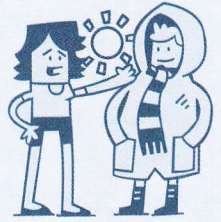
5 We use **whose** to ask who owns something:

Whose hat is this?

6 We use **what** to ask about things or actions and **who** to ask about people:

What do you want to eat?

Who is that man over there?



A The concert ticket

Complete the questions in this conversation by putting in the correct question words.

0 *What'* s in this envelope? ~ A ticket.

1 ticket is it? ~ It's my ticket.

2 did you get a ticket for the concert? ~ I queued at the box office.

3 is the concert? ~ Next Friday.

4 are your seats? ~ At the back of the hall.

5 did you choose those seats? ~ Because it's going to be very loud.

6 are you going to the concert with? ~ Two of my friends.

7 friends are you going with? ~ Pete and Dave.



B The new dress

Write the questions in this conversation, using the words in brackets and the correct question words and verb tenses.

- 0 What are you wearing? (you/wear) ~ I'm wearing a new dress.
 1 (you/buy a new dress) ~ I bought a new dress because I'm going to a party tomorrow.
 2 (you/buy/it) ~ I bought it in a new shop in town.
 3 (the shop/called) ~ It's called 'Beautiful People'.
 4 (street/the shop/be/in) ~ It's in Taylor Street.
 5 (party/it/be) ~ It's Stella's party.
 6 (be/Stella) ~ She's a new friend of mine.

C London Quiz

Write or complete the questions for a quiz about London, using the words in brackets and the verb tenses in italics.

- 0 What do people call the financial district of London? (people/call) *present simple*
 1 ? (London Marathon/end) *present simple*
 2 in Trafalgar Square? (statue/be) *present simple*
 3 in Portobello Road? (people/buy) *present simple*
 4 ? (Heathrow Airport/open) *past simple*
 5 ? (street/the Prime Minister/live in) *present simple*
 6 to the Tate Modern? (people/go) *present simple*

ANSWERS 0. The City 1. On Westminster Bridge 2. Lord Nelson's 3. Antiques 4. In 1946 5. Downing Street 6. Because it's a famous art gallery

D Police investigation

Write the questions asked by a police officer while investigating various crimes. Short answers to each question are underlined.

- 0 Where were you at 3 o'clock yesterday afternoon?
 I was at home at 3 o'clock yesterday afternoon.
 1
 I ran away because I was scared.
 2
 I last saw the missing person three weeks ago.
 3
 The burglars got into my house by breaking a window.
 4
 They broke the kitchen window.
 5
 The burglars took my laptop and some jewellery.



- 5 Some examples of questions with **how**:

How often do you check your emails?

How many people did you invite?

- 6 We use **how long**, **how far** and **how often** in the pattern:

How long/far/often + auxiliary + subject + verb?

How long does the film last?

- 7 We also use **how far** in these patterns:

How far + be + it + from A to B?

How far is it from your home to your office?

How far + be + A from B?

How far is your home from your office?

- 8 We use **how much** in these patterns:

How much + auxiliary + subject + verb?

How much did you pay?

How much + be + subject?

How much was the ticket?

How much + uncountable noun + auxiliary + subject + verb?

How much money have you spent?

(Uncountable nouns have no plural form. See p. 72.)

- 9 We use **how many** in these patterns:

How many + plural noun + auxiliary + subject + verb?

How many tickets did you buy?

How many + plural noun + verb?

How many people live in your house?

- 10 We can form questions with the pattern **how + adjective + be + subject**:

How old is he?

How expensive was it?

Grammar in action

- 7 We use **how long** to ask about a period of time:

How long is this film?

- 8 We use **how far** to ask about a distance:

How far is it from London to Paris?

- 9 We use **how often** to ask about the number of times something happens:

How often do the trains go to London?

- 10 We use **how much** to ask about the cost or amount of something:

How much is that guitar?

How much milk would you like?



- 11 We use **how many** to ask about a number of things or people:

How many potatoes would you like?

- 12 We use **how** with an adjective to ask for personal details:

How old are you?

How tall are you?

DETAILS	
AGE:	17
HEIGHT:	170cm

We also use **how** with an adjective to ask questions which can be answered 'very' or 'not very', etc.:

How angry are you?

E Travel survey

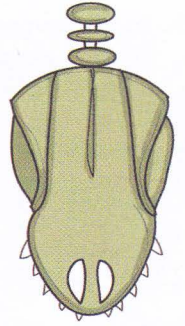
Complete this survey about public transport by putting in the question words.

- | | | |
|---|---|-------------------------|
| 0 | <u>How long</u> have you lived in this area? | For about 2 years. |
| 1 | do you spend on travel per week? | About £30. |
| 2 | does it take you to travel to work? | About 20 minutes. |
| 3 | is it from your home to the nearest bus stop? | About 500 metres. |
| 4 | journeys do you make by bus? | About 3 a week. |
| 5 | do you buy a travel card? | Every month. |
| 6 | do you think the transport service is? | I think it's very good. |

F Museum questions

Write the questions in this conversation between a tourist and a tour guide about a museum. Begin each question with *How* and use the words in brackets.

- 0 How far is it from the bus stop to the museum? (it/be/the bus stop/the museum)
The bus station is quite close to the museum.
- 1 (be/the building)
It's over 500 years old.
- 2 (it/be/a museum)
It's been a museum for about 30 years.
- 3 (it/be/popular)
It's extremely popular.
- 4 (tourists/visit/it/every year)
About a million tourists visit it every year.
- 5 (there/be/special exhibitions)
There are special exhibitions three times a year.
- 6 (season ticket for the museum/cost)
A season ticket for the museum costs £60.



G Brian is leaving

Complete this conversation between work colleagues by completing or writing the questions. The short answers to each question are underlined.

- CLIVE Who were you talking to⁰ just now?
KATE I was talking to Brian. He's an assistant here.
- CLIVE¹ ?
KATE He's Fiona's assistant.
- CLIVE² you?
KATE He told me that he was leaving the company.
- CLIVE Really?³ ?
KATE He's leaving because he doesn't like working here any more.
- CLIVE⁴ ?
KATE He's going to leave next month.
- CLIVE⁵ ?
KATE He's going to work in Birmingham.
- CLIVE⁶ ?
KATE He's going to work for a company called Gregory Systems.
- CLIVE⁷ ?
KATE That company is not very big.
- CLIVE⁸ that job?
KATE He got that job by answering an advert.
- CLIVE⁹ ?
KATE He's going to earn over £100,000 a year.

Before you do exercise G, answer this question: If two people are *colleagues*, they:

- A live in the same place.
- B work in the same place.
- C are close friends.
- D travel together.

OVER TO YOU Now go to page 122.