

12 Should

Uses and contexts

- 1 Some examples of **should**:
*I **should go** to bed now – it's late.*
*You **shouldn't work** so hard.*
*What **should I say**?*

- 2 Forms of **should**:

POSITIVE

should + verb

*You **should do** more exercise.*

NEGATIVE

shouldn't + verb

*You **shouldn't watch** so much TV.*

QUESTIONS

should + subject + verb

***Should I phone** them again?*

- 3 We use **should** for the present and the future:
*You **should speak** to him now.*
*You **should speak** to him tomorrow.*

Grammar in action

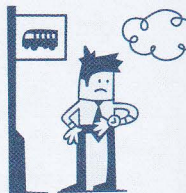
- 1 We use **should** to say that we believe that something is a good idea or the right thing to do, and **shouldn't** to say that we believe that something is a bad idea or the wrong thing to do:
*We **shouldn't keep walking**. We **should find a place to eat** now.*
- 2 We use **should** and **shouldn't** to give or ask for advice:
*You **should go home** – you're ill.*
*You **shouldn't spend** so much money.*
*What **should I wear** for the party?*



We often use **I think, I don't think, and Do you think?** with **should** to give or ask for advice and to give opinions:

*I **think we should look** for a better hotel.*
*I **don't think we should stay** at this hotel.*
***Do you think we should look** for another hotel?*

- 3 We use **should** to talk about things that we expect to be true now but in fact are not true:
*The bus **should be here** now.*



A Going to London

Complete this conversation, using **should** or **shouldn't** and the phrases below the text.

SAM I'm going to London next month. You've been to London, haven't you?
*What **should I do*** ⁰ while I'm there?

LUCY Well, of course, ¹ some sightseeing. ² to the famous places but ³ only the places the tourists always go to. ⁴ in the parks and ⁵ interesting things to buy in the markets. ⁶ all your time doing the things that every tourist does. ⁷ the real city.

SAM ⁸ a car?

LUCY No, ⁹ that. ¹⁰ public transport.

SAM ¹¹ a travel card?

LUCY Yes, but ¹² too far every day. ¹³ that London is a very big city and ¹⁴ to do too much every day.

0 What/I/do

1 you/do

2 You/go

3 you/visit

4 I/think/you/walk

5 you/look for

6 You/spend

7 You/experience

8 you/think/I/hire

9 I/think/you/do

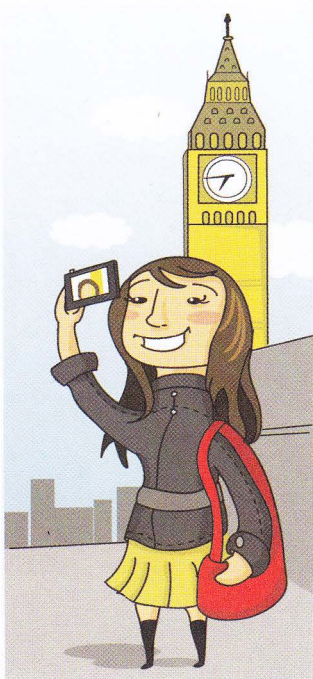
10 You/use

11 I/get

12 you/travel

13 You/remember

14 you/try



B Helping the environment

Complete this blog about the environment, using *should* or *shouldn't* and the verbs in brackets.

In my opinion, people should do⁰ (do) a lot more to help the environment and they shouldn't continue⁰ (continue) to damage it. We¹ (use) our cars so much because cars produce pollution. We² (walk) more and we³ (cycle) more. Some people say that we⁴ (fly) so much because aeroplanes are very bad for the environment.

We⁵ (buy) products that are bad for the environment and we⁶ (throw away) so many things. People⁷ (recycle) more and governments⁸ (organize) more ways of recycling things. Companies⁹ (produce) more products that aren't bad for the environment. And we¹⁰ (destroy) the land by cutting down trees and building on it. Also, we¹¹ (look for) other ways of getting the fuel we need, for example by using solar energy. We¹² (use up) all the world's natural resources. We¹³ (wait) – we¹⁴ (take care) of the planet now.

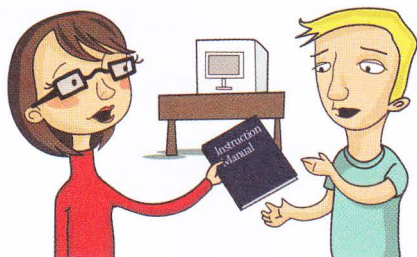
Before you do exercise B, complete phrasal verbs with these meanings by putting in the correct prepositions:

- A use (use all of something)
- B look (try to find)
- C throw (put into dustbin)

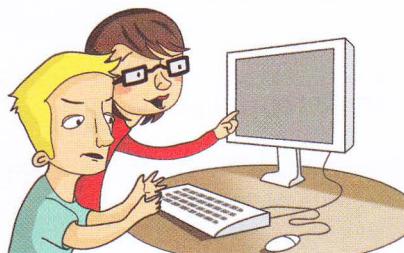
WORD FOCUS

C The new computer

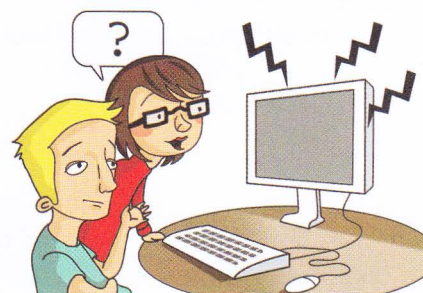
Alan has bought a new computer and his girlfriend Sarah is helping him to get it ready for use. Look at the pictures and complete Alan's statements, using *should* or *shouldn't* and the verbs in brackets.



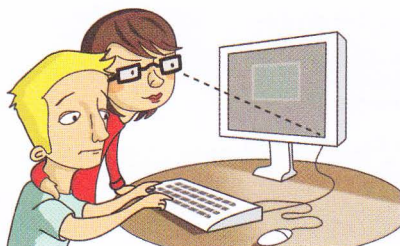
0 The instruction manual should tell (tell) us everything.



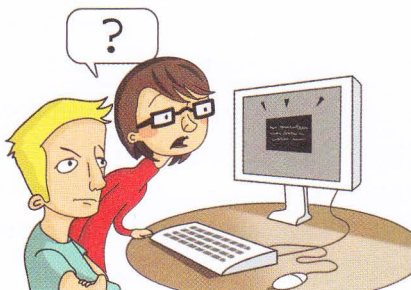
1 The screen (come on) now.



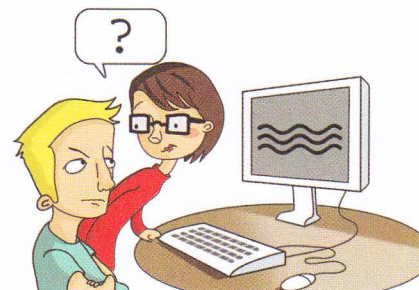
2 It (make) that noise when you switch it on.



3 The time (be) in that corner.



4 That message (appear) on the screen. Something's wrong.



5 I'm sure the screen (look) like that.

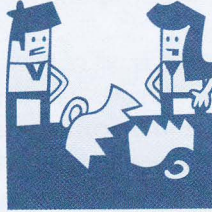
4 Compare:

- **could, should** and **would**
- **should** and **must / have to**
- **should** and **might**

Grammar in action

4 We can use **could** (but not *couldn't*) to give advice and to suggest that we think that something is a good idea. With this meaning, **could** is not as strong as **should**:

We could try to repair it.

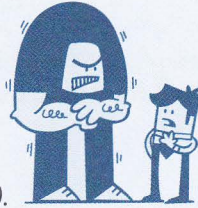


We often use **I suppose** or **I guess** before **could** with this meaning:

I suppose we could try to repair it.

We can also use **I'd** (= **I would**) and **I wouldn't** to give advice to someone and to tell someone that we think that something is a good or a bad idea. We often say 'if I were you' when we give advice in this way:

I wouldn't argue with him (if I were you).



5 We use **should** to talk about actions that we believe are right or correct, and **shouldn't** to talk about actions that we believe are wrong or bad. We use **must/mustn't** for official rules and laws:

People shouldn't drop litter in the street. (= it's wrong)

People mustn't drop litter here. (= it's against the law)

Should is not as strong as **must** or **have to** – we use **should** for giving advice and **must/have to** for giving orders.

(See also unit 11 on p. 42.)

6 **Should** is stronger than **might**. We use **might** to say that something is possible, and **should** to say that something is likely or probable:

They should win the game. There are only five minutes left.

They might win the game. There are five minutes left.

3-0

0-0

(See also unit 10 on p. 38.)

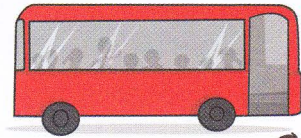
D Advice on personal problems

Change the advice given in a teenage magazine, using the word in brackets. You will need to use some negative forms.

- Perhaps you should discuss the problem with him. (could)
I guess you could discuss the problem with him.
- You should tell him how you feel. (would)
If I were you, I'd/I would tell him how you feel.
- Maybe you should start doing a different sport. (could)
I suppose doing a new sport.
- I think you should speak to your teacher about the problem. (would)
..... to your teacher about the problem, if I were you.
- You shouldn't get upset about the problem. (would)
If I were you, upset about the problem.
- Maybe you should apologize to her. (could)
I suppose to her.
- I don't think you should listen to those people. (would)
..... listen to those people, if I were you.
- You should forget about him and get a new boyfriend. (would)
If I were you, about him and get a new boyfriend.



- 7 You should eat healthier food. (would)
 healthier food, if I were you.
- 8 I don't think you should feel bad about what happened. (would)
 bad about what happened, if I were you.



E The school trip

Complete what a teacher says to a class before a school trip by putting the correct word from the choices in brackets in each gap.

OK, tomorrow's trip to the museum. Everyone **must**⁰ (might/must) meet at the school entrance by 8.30 a.m. This is very important – you¹ (mustn't/might not) be late because we² (might/must) get to the museum in time for our guided tour.

You³ (must/should) enjoy the museum because it's a very interesting place. We⁴ (might not/shouldn't) have time to see all of the interesting exhibitions but we⁵ (should/must) be able to see most of them. The museum⁶ (mustn't/shouldn't) be too crowded.

The journey back⁷ (mustn't/shouldn't) take more than an hour and we⁸ (might/should) arrive back here at 6 p.m. However, we⁹ (shouldn't/might not) get back for 6 p.m. because there¹⁰ (must/might) be a lot of traffic on the way. So you¹¹ (might/should) tell your parents to get here by 6 p.m. but they¹² (might/should) have to wait for you.



F When you come to this country

Complete this email, using one of the modal forms from the box. Use each of the choices only once.

~~should~~ shouldn't could would wouldn't must mustn't might might not

Hi Martha,

When you come to this country, I think you **should**⁰ see as much of the country as possible. I¹ stay in the city all the time if I were you – you² spend the whole trip in such a busy and crowded place. I³ see some of the countryside if I were you, it's very varied and very beautiful. I don't know if you want to drive while you're here, but I guess you⁴ hire a car and take a little tour. But don't forget that you⁵ have a proper licence to do that and that you⁶ drive on the right in this country; they drive on the left here.

Unfortunately, I⁷ see you while you're here because I⁸ have to go away during that period. I'm not sure about that but I'll let you know later.

Eleanor

OVER TO YOU Now go to page 123.